

BLOOM

CORINNE NATEL

FLEUR ALSTON

GILL WILSON

HENRIE HALDANE

4 WALLS

MORGAN-DAVIES ART

LAFONTAINE CONTEMPORARY ART



Unforgettable

Acrylic, collage and mixed media on canvas
80 cm



The First Time I Met You

Acrylic and mixed media on canvas
102 x 102 cm



Lagoon Idylle

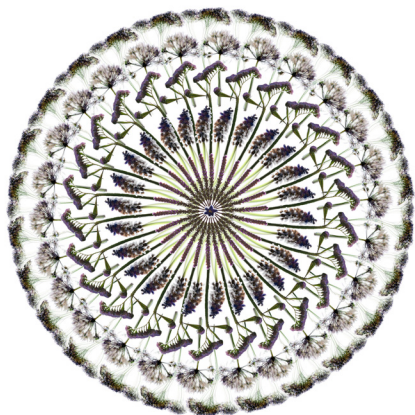
Acrylic, collage and mixed media on canvas
60 cm



Superluminal

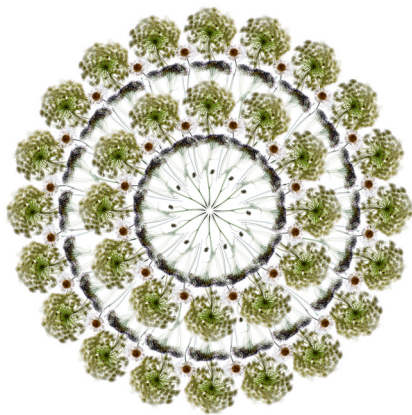
Acrylic and mixed media on canvas
102 x 102 cm

CORINNE NATEL is a contemporary artist specialising in abstract mixed media paintings. The collection for this exhibition are part of a series called Efflorescence which means coming into flower, developing, and blossoming. The pieces were created from the beginning of spring with the days getting lighter and brighter, with the flowers and trees developing and blossoming – coming into bloom. The paintings are created mostly face down rather than upright and paint and ink are poured on while it runs and then the desired shape is guided. A blank white canvas takes on a new form through the expression of energy and begins to develop a life of its own and a new entity, aiming to create vibrant and romantic works that propose the idea of blooming into a beautiful floral world.



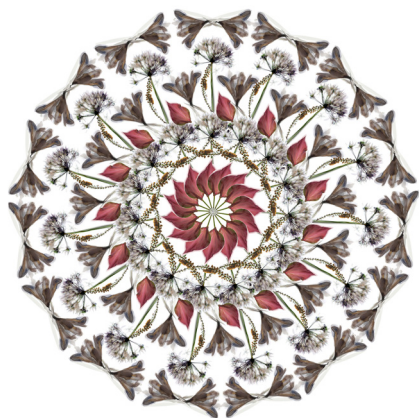
White Flower (I)

C-type print on paper
55 x 55 cm



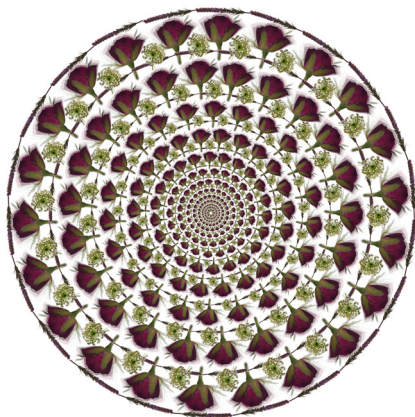
White Flower (II)

C-type print on paper
55 x 55 cm



White Flower (III)

C-type print on paper
55 x 55 cm



White Flower (IV)

C-type print on paper
55 x 55 cm

FLEUR ALSTON is concerned with our relationship with the natural world and the objects used in her photo collages are heavily symbolic of life and death. The artist believes people are now so far removed from the cycles of the living world that they either fear that unknown exponentially, or crave intimate knowledge of it. In some ways Fleur's work is exploring this disorder and departure from nature. Her new portfolio of work explores the changes in a single flower over a period of time; highlighting the various contortions, unexpected movements and beauty of the flower as it evolves. Each image in this floral series is a combination of 6 photographs, taken every other day, over a period of 12 days. The result is a secret world that is subtly revealed to us, in all its natural beauty.



Aura

Wheat straw in perspex box
100 x 100 cm



Coral

Wheat straw in perspex box
100 x 100 cm



Orbit

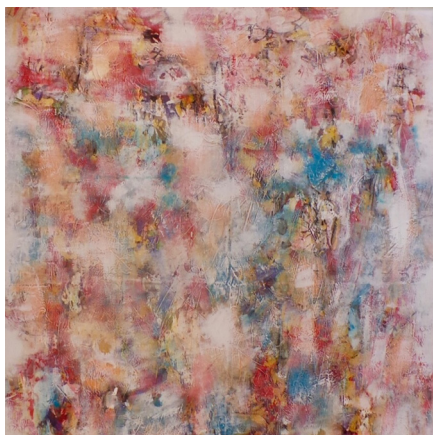
Wheat straw in perspex box
100 x 100 cm



Spiral

Wheat straw in perspex box
100 x 100 cm

GILL WILSON draws on the fundamental beauty of the natural world. She has worked with plant fibre pulps for the last 30 years after an inspirational study tour to Japan. Her work is characterized by an innovative manipulation of the material – a malleable medium which can be liquid enough to be sprayed yet dense enough to be cast. Her original training in Japan taught her to work with the essential simplicity of the medium with the qualities of aesthetic purity and ecological sustainability. The fibre pulp can be smooth or richly textured and dyed to any colour or tone, providing the most subtle graduations of tonal variation and transformed into beautiful floral artworks celebrating the beauty in our world.



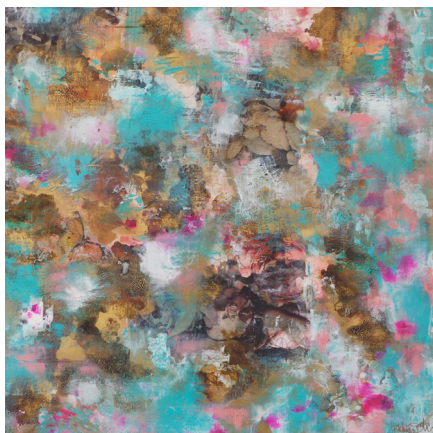
Dance With Me (detail)

Oil & mixed media on canvas
154 x 124 cm



Transcendence

Oil & mixed media on board
45 x 45 cm



Spring Flowers

Oil & mixed media on canvas
104 x 104 cm



The Blues

Oil & mixed media on canvas
104 x 104 cm

HENRIE HALDANE adopts an ethereal and dream-like feel, whilst incorporating a botanical theme in her paintings. This new collection echoes the artist's ever popular 'water lily' series, inspired by Monet. Inspiration from Indonesia is also reflected in these vibrant new paintings full of colour & light. Henrie incorporates her memories of beautiful Balinese lily ponds, reflecting peace and tranquillity; and uses the lotus lily flowers as a symbol for beauty, spirituality and transcendence. Henrie paints mainly with oils and mixed media, using palette knives & brushes. She creates a fluidity of vertical and horizontal movement, whilst weaving in metallic leaf to intensify the composition. Photo transfers and layers of decoupage are incorporated to create these highly textural and energetic paintings, for which the British artist is well known & collected worldwide.

BLOOM

BLOOM is a celebration of colour, pattern and nature's vitality. It unites 4 British artists who all draw their inspiration from the natural world, yet present their artwork in very different but harmonious ways.

Flowers have been used by artists to create stories and personality in their art for centuries. As well as the obvious potency of their colour and mood, flowers have a hidden language or floriography. Artists have worked to capture this rich symbolism. Either as a background detail or as the focal point, flowers have represented a multitude of emotions and feelings. In art, floral references are beautiful expressions of life's cycles, fragile fertility and nature's beauty.

Bloom is brought to you by 4WALLS. 4WALLS is an exciting collaboration between two established art dealers: Morgan-Davies Art and Lafontaine Contemporary Art. They bring their knowledge and combined expertise of 35 years in the art world, having previously worked together in renowned Mayfair galleries and now unite to curate this beautiful show.

Following the success of the inaugural 'EARTH' exhibition, 4WALLS now brings 4 different artists together to exhibit under this new show 'BLOOM'. Each 4WALLS exhibition highlights 4 leading contemporary artists, within temporary gallery walls, under a unique & changing exhibition statement.

BLOOM

21 – 26 May 2019

Old Brompton Gallery

238 Old Brompton Road, London SW5 0DE

Opening hours: 10am – 7pm

07773 593122 | 07811 202693

4walls.london | morgandaviesart.com | lc-arts.com